

Supplementary table 1. Overview of literature referred to in the text. The first part of the table represents studies where the outcome is mortality, the second part where the outcome is hospital admissions. Abbreviations used in the table are explained in the footnotes. Statistically significant results are denoted in italics; non-significant results are either not presented or not italicised.

First author and reference	Study period location, and number of cases (N) <sup>a</sup>	Study design	Exposure information	Indicators of air pollution and other variables in the model	Levels <sup>b</sup>	Outcome <sup>c</sup>	Results
<b><i>Outcome: Mortality</i></b>							
Hoek 2001[9]	1986-1994 The Netherlands N=27.8 per day	Time-series study, modelling with Poisson regression using GAM.	Measured data	O <sub>3</sub> , black smoke, PM <sub>10</sub> , SO <sub>2</sub> , NO <sub>2</sub> . 1 day lag and 7-day means	Not given.	ICD9:430-436	1-99 <sup>th</sup> percentile pollution difference: <i>O<sub>3</sub> Lag 1: RR=1.07, black smoke 7-day mean: RR=1.04, CO 7-day mean: RR=1.066, SO<sub>2</sub> 7-day mean: RR=1.047.</i> RRs for PM <sub>10</sub> and NO <sub>2</sub> ns.
Zeka 2005 [10]	1989-2000 20 cities in the USA. N not given	Case-crossover design	Multiple monitors, daily and hourly measurements	PM <sub>10</sub> . Lag 0-Lag 2	Mean:15.9-37.5	ICD10:I60-69	ns
Hong 2002[5]	1991-1997 Seoul Korea N <sub>i</sub> =7137(2.8 per day) N <sub>h</sub> =11868(4.6 per day)	Time-series. General additive model.	From 20 fixed monitoring sites. 24-hour averaging over all stations except for ozone, where an 8-h average was used	Total suspended particles (TSP), NO <sub>2</sub> , SO <sub>2</sub> , CO and O <sub>3</sub> . Adjusted for temporal trends, day of the week, same-day and	TSP=81.1 µg/m <sup>3</sup> , SO <sub>2</sub> = 15.4 ppb, NO <sub>2</sub> =31.1 ppb, O <sub>3</sub> =20.1 ppb and CO= 12.0 ppb. Lag 0-Lag 3.	IS and HS. ICD9:431-434	<i>RR=1.03 for an IQR(≈60 µg/m<sup>3</sup>) in TSP Lag 0 RR=1.04 for an IQR(≈18 ppb)in SO<sub>2</sub> Lag 0 RR=1.04 for an IQR I(≈14 ppb) in NO<sub>2</sub> Lag 1, RR=1.06 for an IQR I(≈8 ppb) in CO Lag 1</i>

				previous-day temperatures, relative humidity (RH) and atmospheric pressure (AP).			<i>RR=1.06 for an IQRI (<math>\approx 18</math> ppb) O<sub>3</sub> Lag 3.</i>
Kan 2003. [6]	1991-1999 Shanghai, China N=2426 (3.32 per day)	Time-series analysis. General additive models	Data from Shanghai meteorological bureau and Shanghai environmental monitoring centre.	PM <sub>10</sub> , SO <sub>2</sub> and NO <sub>2</sub> . Lag 1. Temperature, RH, dew point. Control for longer-term trends, seasonality, weather and weekday.	Mean daily levels: PM <sub>10</sub> 97.0, SO <sub>2</sub> 48.4, NO <sub>2</sub> 37.2 $\mu\text{g}/\text{m}^3$ .	ICD9=430-438	<i>RR=1.008(1.000-1.016) for a 10 <math>\mu\text{g}/\text{m}^3</math> increase in PM<sub>10</sub>. Adjusted for SO<sub>2</sub> and NO<sub>2</sub>, RR=1.004 (0.993-1.016)</i>
Hong 2002. [4]	1995 - 1998, Seoul, Korea. N=15.3 per day	Time-series + GAM	20 monitoring sites with hourly measurements, aggregated to daily means and then averaged over the stations. For ozone an 8-h average was used. For the other a 24-h average.	PM <sub>10</sub> , SO <sub>2</sub> , O <sub>3</sub> , CO and NO <sub>2</sub> . Control for seasonal and long-term trends, temperature, RH and barometric pressure.	PM <sub>10</sub> =47.4 $\mu\text{g}/\text{m}^3$ , NO <sub>2</sub> =25.0 ppb, SO <sub>2</sub> =6.8 ppb, O <sub>3</sub> =13.3 ppb, CO=0.9 ppm.	ICD10:160-169	<i>In a single-pollutant model for PM<sub>10</sub> the increase in relative risk of an IQRI (<math>\approx 22</math> <math>\mu\text{g}/\text{m}^3</math>) was 1.5 %. For NO<sub>2</sub> the increase was 3.1, with an IQR of circa 8 ppb.</i>
Kim 2003. [8]	1995 - 1999. Seoul Korea N= 15.00 per day N <sub>i</sub> = 2.83 per day	Time-series + GAM Poisson regression	Hourly measurements for PM <sub>10</sub> , average of 27 monitoring sites	6-day cumulative mean of PM <sub>10</sub> . Controlled for time trends, temperature, RH, air	PM <sub>10</sub> =64.19 $\mu\text{g}/\text{m}^3$	Cerebrovascular: I60-69 and subgroup:I63	<i>An IQRI (43.12 <math>\mu\text{g}/\text{m}^3</math>) PM<sub>10</sub> was associated with 6.3% increase in cerebrovascular mortality</i>

				pressure and weekday.			and 10.3 % increase in IS mortality.
Kettunen 2007. [7]	1998-2004 Helsinki, Finland.. N=3265	Time-series Poisson regression	One measuring site for one or several pollutants.	Ultra-fine particles (UFP), PM <sub>2.5</sub> , PM <sub>10</sub> , NO <sub>2</sub> , CO and O <sub>3</sub> . Adjusted for trend, weekday, holidays, temperature, RH and barometric pressure. Lag 0-Lag 3. Age >65. Separate warm and cold seasons.	UFP=8986/cm <sup>3</sup> . PM <sub>2.5</sub> =8.2 µg/m <sup>3</sup> , PM <sub>10</sub> =16.3 µg/m <sup>3</sup> , CO=6.7 mg/m <sup>3</sup> (8-h mean), O <sub>3</sub> =55.8 (8-h mean), NO <sub>2</sub> =27.6 µg/m <sup>3</sup> .	ICD10: I60-I61 and I63-I64. Separate I63.	Warm season: 10 % increase in stroke mortality for an IQRI (≈9 µg/m <sup>3</sup> ) in PM <sub>10</sub> Lag 0. ≈7 % increase in stroke mortality for an IQRI (≈6 µg/m <sup>3</sup> ) in PM <sub>2.5</sub> , Lag 0 and Lag 1. All other pollutants and cold season ns.

### **Outcome: Hospital admission**

Burnett 1999. [17]	1980-1994. Toronto, Canada. N not given	Time-series study, modelling with Poisson regression using GAM.	Daily averages from four monitoring sites.	Adjustment for long-term trends, weekday, temperature, dew point, RH forward inclusion.	PM <sub>10</sub> = 36 µg/m <sup>3</sup> , CO=1.4 ppm, NO <sub>2</sub> =30 ppb, SO <sub>2</sub> =8 ppb and O <sub>3</sub> =27 ppb.	Admissions for cerebral vascular disease plus others. ICD?	No increase in risk observed
Wellenius 2005. [14]	Starting date 1986-1988 and end date 1993-1999 9 US cities N <sub>i</sub> =15550 3 N <sub>h</sub> =19314	First/1 <sup>st</sup> stage: time-stratified case-crossover design to obtain estimates for each of 9 cities. Second/2 <sup>nd</sup> stage:	Daily measures of PM <sub>10</sub> and hourly measurements of CO, NO <sub>2</sub> and SO <sub>2</sub> giving daily means for each city.	PM <sub>10</sub> , CO, NO <sub>2</sub> and SO <sub>2</sub> . Controlled for meteorological covariates.	PM <sub>10</sub> = 28 µg/m <sup>3</sup> . CO: 1.0 ppm, NO <sub>2</sub> : 23.5 ppb, SO <sub>2</sub> : 6.2 ppb, temperature: 9.5 C.	Hospital admissions for IS and HS. ICD?	An IQRI (≈20 µg/m <sup>3</sup> ) of PM <sub>10</sub> was associated with a 1.03 % increase in the rate of admissions Lag 0. Similar results for CO, NO <sub>2</sub> and SO <sub>2</sub> . HS: No association with any of

		random effects meta-analysis					the pollutants Lag 0-Lag 2.
Le Tertre, 2002. [18]	Start between 1989 and 1994. End between 1994 and 1997 Eight European cities N=4-43 per day	Meta-analysis. Time-series, Poisson regression, pooled over 8 cities	From fixed monitoring sites, 1-12 per city/area.	PM <sub>10</sub> , black smoke. Controlled for long-term trends, season, weekday, holidays, influenza epidemics, temperature and RH. Age > 65.	PM <sub>10</sub> from 13.6-53.3 µg/m <sup>3</sup>	ICD9,430-8	No increase for a 10 µg/m <sup>3</sup> increase in PM <sub>10</sub> or black smoke
Pönkä 1996. [21]	1987-1989 Helsingfors, Finland N=7232 (6.6 per day)	Time-series Poisson regression	1-6 sites, (8 in total). Hourly measurements for SO <sub>2</sub> , temperature and humidity. Daily measurements for PM <sub>10</sub> , ozone, NO and NO <sub>2</sub> . All aggregated to give daily means.	NO and O <sub>3</sub> , Lag 0-Lag 7. Adjusted for year, weekday, season and influenza.	Daily means: SO <sub>2</sub> =19, NO <sub>2</sub> =39, NO=91, O <sub>3</sub> =22, TSP=76 µg/m <sup>3</sup> .	ICD9:430-438). Subgroups : ICD9=433, ICD9=434, ICD9=435.	<i>Statistically significant association between ER admissions for cerebrovascular disease and overall pollutants. All other associations : p≥0.05</i>
Poloniecki 1997. [19]	1 April-31 March 1994 London, UK N=28.2 per day	Time-series Poisson models.	Measurements from a background monitoring site in central London. Ozone as the mean	O <sub>3</sub> , NO <sub>2</sub> , SO <sub>2</sub> , CO, temperature and RH. Adjusted for weekday and public holidays, long-term	O <sub>3</sub> =13 ppb (from 9am to 5 pm), NO <sub>2</sub> =35 ppb, SO <sub>2</sub> =6 ppb, CO=0.9	ICD9:430-438. Plus other outcomes.	Increase from 10 <sup>th</sup> to 90 <sup>th</sup> percentiles (and negative for all except SO <sub>2</sub> ).

			of 8-h means. NO <sub>2</sub> , SO <sub>2</sub> and CO daily means. Black smoke, mean of 5 sites.	trends.	ppm and black smoke=12 µg/m <sup>3</sup> .		
Wordley 1997. [15]	1992-1994 Birmingham, England N=6.6 per day	Linear regression models	1 monitoring site	NO <sub>2</sub> , SO <sub>2</sub> , O <sub>3</sub> and PM <sub>10</sub> . Adjusted for weekday month and maximum daily temperature and RH (if sig.) and long-term trend (if sig.). NO <sub>2</sub> , SO <sub>2</sub> , O <sub>3</sub> in sensitivity analysis.	PM <sub>10</sub> mean 24 h =25.6 µg/m <sup>3</sup>	Hospital admission for acute cerebrovascular disease and other. ICD	<i>Significant association between PM<sub>10</sub> and cerebrovascular admissions, Lag 0 Regression coefficient = 0.0137).</i>
Villeneuve 2006.[23]	1992 to 2002 Edmonton, Canada N=12422	Time-stratified case-crossover analysed with conditional logistic regression.	3 monitoring sites. Hourly measurements were aggregated to give daily means. Averages from the values of the sites.	Daily maximum O <sub>3</sub> , daily mean NO <sub>2</sub> , SO <sub>2</sub> , CO, PM <sub>2.5</sub> and PM <sub>10</sub> . Adjusted for temperature and relative RH. Lag 0, Lag 1 and Lag 3. Age>65.	SO <sub>2</sub> =2.0 ppb, NO <sub>2</sub> =22 ppb, CO=0.7 ppm, O <sub>3</sub> mean=16.5 ppm, O <sub>3</sub> max=30.5, PM <sub>2.5</sub> =7.0, PM <sub>10</sub> =20.0	Emergency department visits for stroke. ICD	<i>Warm season significant for IS ORs for SO<sub>2</sub> Lag 0 (1.11), NO<sub>2</sub> Lag 0 (1.17) and Lag 1 (1.18) and Lag 3 (1.26), and CO Lag 0-Lag3. IQR=2.0 ppb for SO<sub>2</sub>, 13.5 ppb for NO<sub>2</sub>. ns for all year and cold season.</i>
Szyszkowicz 2008. [22]	1992-2002 Edmonton, Canada N=10930	Time-series. General linear mixed models	3 monitoring sites. Hourly measurements aggregated to daily means,	CO, NO <sub>2</sub> , SO <sub>2</sub> and O <sub>3</sub> . RH and temperature. Adjusted for temperature and relative	CO= 0.6 ppm, NO <sub>2</sub> =19.7 ppb, SO <sub>2</sub> =2.2 ppb, O <sub>3</sub> =17.8 ppb, PM <sub>10</sub> =19.	ICD9: 434, 436	<i>IQRI (≈13 µg/m<sup>3</sup>) in NO<sub>2</sub> Lag 0 gives a change in RR of 6.3 %. PM<sub>10</sub> estimate not given.</i>

			averaged over the three sites.	humidity. Stratified on age, season and gender.	4 µg/m <sup>3</sup>		
Henrotin 2007. [24]	1994-2004 Dijon, France N <sub>i</sub> =1487, N <sub>h</sub> =220	Case-crossover design with bidirectional sampling.	Measured hourly at 1 monitoring site. 24-h averages except for ozone (8-h averages)	SO <sub>2</sub> , CO, NO <sub>x</sub> , O <sub>3</sub> and PM <sub>10</sub> Lag 0- Lag 3. Adjusted for temperature, RH, holiday and influenza epidemics.	SO <sub>2</sub> =4, NO <sub>x</sub> =39, O <sub>3</sub> =26, CO=590, PM <sub>10</sub> =19 µg/m <sup>3</sup> .	Dijon stroke register recorded first-ever strokes. Separate IS and HS	OR = 1.13 (IS, -men), for a 10 µg/m <sup>3</sup> increase due to O <sub>3</sub> Lag 1. No effects on HS or for the other pollutants.
Low 2006. [16]	1995-2005 New York City, USA N=16906 (5.1 per day)	ARIMA models (time-series?)	Data from monitoring sites, for PM <sub>10</sub> 14 stations, measured every 6 days. Interpolated to obtain measurements for separate days. Ozone, SO <sub>2</sub> , NO <sub>2</sub> , CO, temperature and humidity hourly. Aggregated to give daily averages.	PM <sub>10</sub> , O <sub>3</sub> , SO <sub>2</sub> , NO <sub>2</sub> , CO, temperature, RH, airborne allergens	SO <sub>2</sub> (0.009 ppm), PM <sub>10</sub> (22.74 µg/m <sup>3</sup> ), NO <sub>2</sub> (0.019 ppm), NO <sub>x</sub> (0.057 ppm), O <sub>3</sub> (0.003 ppm), CO (0.888 ppm).	Broad definition: ICD9 433.0-436) Narrow definition: ICD9:433, 434, 433.1 or 434.1. Eliminated cases with only code 433.	Broad definition: PM <sub>10</sub> Lag 0: ??? coefficient=0.008 (each 1 µg/m <sup>3</sup> increase in PM <sub>10</sub> would produce 0.008 extra stroke admissions), SO <sub>2</sub> Lag 0: coeff.=8.878. Narrow definitions.
Tsai 2003. [13]	1997-2000 Kaoshiung, Taiwan N=23179 N <sub>i</sub> =12758 N <sub>h</sub> =5193	Case-crossover design with bidirectional sampling.	6 monitoring sites.	PM <sub>10</sub> , SO <sub>2</sub> , NO <sub>2</sub> , CO, O <sub>3</sub> , temperature, RH. Pollutants and meteorological variables analysed continuously. Cumulative	PM <sub>10</sub> : 78 µg/m <sup>3</sup> SO <sub>2</sub> =10, NO <sub>2</sub> 29 and O <sub>3</sub> =24 ppb. CO=0.8 ppm	ICD9(430-438) Subcategories among others: ICD9:431-32 and ICD9:433-435	Effects on both IS and HS on warm days (>20°C). An IQRI in PM <sub>10</sub> (≈65 µg/m <sup>3</sup> ) gave an OR of 1.54 for HS and an OR of 1.46 for IS. An IQRI in NO <sub>x</sub> (≈17

				e Lag up to 2 previous days. values up to Lag 2?			$\mu\text{g}/\text{m}^3$ ) gave an OR for HS of 1.56 and for IS of 1.55. On cool days (<20°C), no effect was observed except for CO on IS.
Chan 2006 [20]	1997-2002 Taipei, Taiwan N=8582 N <sub>i</sub> =1494 N <sub>h</sub> =690	Time-series Poisson models + GAMs.	16 monitoring sites. Hourly data on air pollution and temperature date aggregated to give daily mean values.	NO <sub>2</sub> , SO <sub>2</sub> , O <sub>3</sub> , CO, PM <sub>10</sub> , temperature and dew point. Lag 0-Lag 3. Age >50.	Mean (O <sub>3</sub> 1-h) 50.9 ppb, mean(CO 8-h) 1.7 ppm, mean(SO <sub>2</sub> 24-h) 4.3 ppb, mean (NO <sub>2</sub> 24-h) 29.9 ppb, mean(PM <sub>10</sub> 24-h) 50.2 $\mu\text{g}/\text{m}^3$ .	ICD9: 430-437 Subcategories: ICD9:430-434,(ICD9: 430-432, ICD9:433-434	ns except for Lag 0 O <sub>3</sub> cerebrovascular disease.
Dominici 2006. [11]	1999-2002 11.5 million Medicare enrollees in USA with populations > 200 000 N not given	Bayesian 2-stage hierarchical models	Measuring sites. Measurements daily or every 3 days..	PM <sub>2.5</sub> , O <sub>3</sub> , temperature, dew-point. Lag 0-Lag 2	PM <sub>2.5</sub> =13.4 $\mu\text{g}/\text{m}^3$	ICD9:430-438	PM <sub>2.5</sub> IQR=11.3-15.2 $\mu\text{g}/\text{m}^3$ . ~1 % in hospital admissions for lag 0 (IQR)
Lisabeth 2008. [12]	2001-2005 Texas, USA N=3508 N <sub>i/tia</sub> =2350	Time-series Poisson regression models.	6 measuring sites	PM <sub>2.5</sub> O <sub>3</sub>	PM <sub>2.5</sub> =7.0 $\mu\text{g}/\text{m}^3$ . O <sub>3</sub> =25.6 ppb.	Ischemic stroke and TIA hospital admissions	IQR (=5.1 $\mu\text{g}/\text{m}^3$ ) in PM <sub>2.5</sub> : RR=1.03 Lag 1

<sup>a</sup> N: the number of cerebrovascular events in the study. N<sub>i</sub>=The number of Ischemic strokes, N<sub>h</sub>=the number of Hemorrhagic strokes. In some studies the number of events per day is given and in some studies the total number of events. We present both, if available.

<sup>b</sup> Median daily mean unless otherwise stated

<sup>c</sup> Definitions used in the table:

ICD9:430-438 and ICD10 codes I60-I69 represent stroke or cerebrovascular disease

Cerebrovascular: ICD9= 430-436

Ischemic stroke: ICD10: I63 or (ICD9: 434, 436) or (ICD9:433-435) or (ICD9:433-434)

Cerebral ischaemia due to occlusion of extracerebral vessels (ICD9:433),  
Occlusion of cerebral vessels (ICD9:434) and transient Ischemic cerebral attacks (ICD9:435)  
Strokes (ICD9:430-434)  
Hemorrhagic strokes (ICD9:430-432) or primary intracerebral haemorrhage (ICD9:431-32)

Abbreviations used in the table:

IQRI=Intra Quartile Range Increase

GAM=General Additive Models

PM<sub>10</sub>=particles with a diameter less than 10

PM<sub>2.5</sub>=particles with a diameter less than 2.5

O<sub>3</sub>=ozone

RH = relative humidity

RR=relative risk

OR=odds ratio

IS=Ischemic stroke

HS=Hemorrhagic stroke,

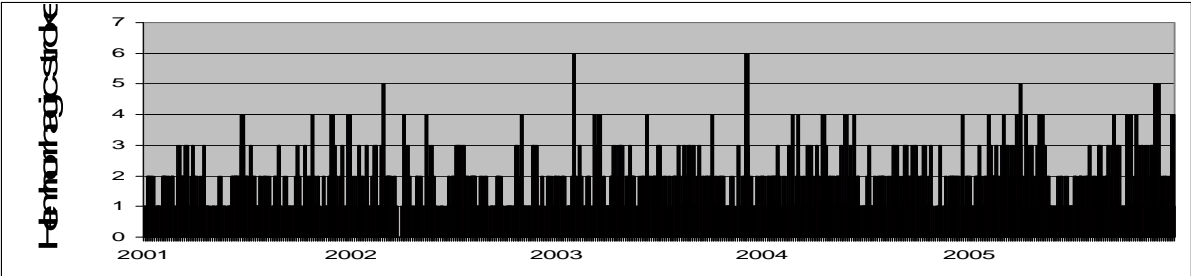
TSP=Total Suspended Particles

ns=Not statistically significant

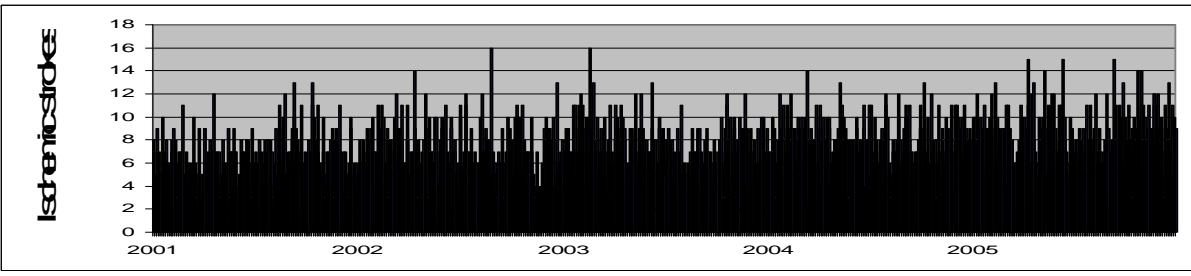
Supplementary File 2. Northern Europe showing Sweden and Scania with two measuring stations at Vavihill and Malmö in the inset. The cities of Helsingborg and Malmö were defined as urban areas (>80 000 inhabitants)

Supplementary fig. 1a-e. Daily admittance to hospital for hemorrhagic stroke (a), ischemic stroke (b), and levels of ozone (c), PM<sub>10</sub> (d) and temperature (e).

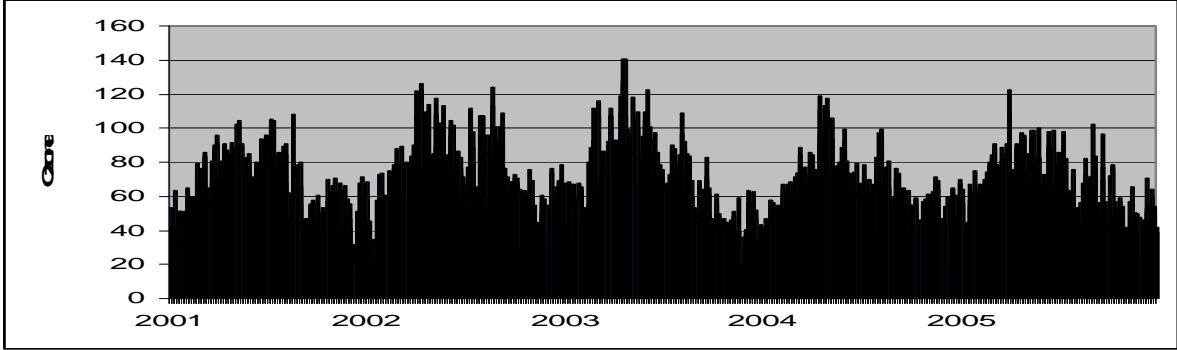
a)



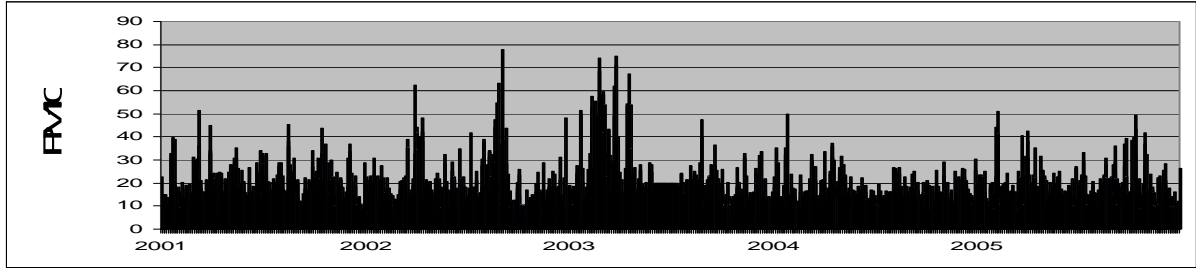
b)



c)



d)



e)

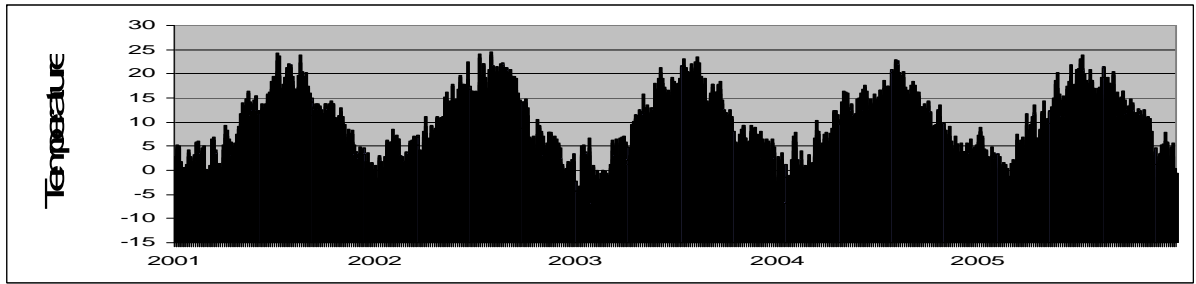


Table 3b Single-pollutant models. Relative risks for ischemic stroke and hemorrhagic stroke in association with measured background levels of PM<sub>10</sub> and ozone, and temperature, Lag 0-Lag 2. Designed as a time-series study, analysed with Poisson regression. Adjusted for month, weekday and year.

	Ischemic stroke						Hemorrhagic stroke					
	Lag 0		Lag 1		Lag 2		Lag 0		Lag 1		Lag 2	
	RR	95 % CI	RR	95 % CI	RR	95 % CI	RR	95 % CI	RR	95 % CI	RR	95 % CI
PM <sub>10</sub> (µg/m <sup>3</sup> )												
<15	1		1		1		1		1		1	
15≤30	1.01	0.97- 1.05	1.02	0.98- 1.06	1.02	0.98- 1.06	0.98	0.87- 1.10	1.00	0.90- 1.12	1.09	0.97- 1.22
≥30	1.04	0.97- 1.12	1.09	1.01- 1.17	1.01	0.94- 1.09	1.07	0.85- 1.27	1.04	0.85- 1.27	1.09	0.89- 1.34
Ozone (µg/m <sup>3</sup> )												
<50	1		1		1		1		1		1	
50≤90	1.01	0.96- 1.06	0.97	0.92- 1.02	0.91	0.92- 1.02	1.11	0.96- 1.28	1.03	0.90- 1.19	1.00	0.87- 1.15
≥90	0.99	0.91- 1.08	0.95	0.86- 1.01	0.94	0.86- 1.02	0.98	0.76- 1.25	0.86	0.67- 1.11	0.97	0.76- 1.24
Temperature (°C)												
-10 ≤2.5	1		1		1		1		1		1	
2.5≤6.5	1.02	0.96- 1.09	0.98	0.92- 1.04	1.00	0.94- 1.07	1.03	0.86- 1.22	1.06	0.90- 1.26	1.09	0.92- 1.29
6.5≤12	1.02	0.94- 1.10	0.99	0.91- 1.07	1.02	0.94- 1.11	0.98	0.78- 1.23	0.93	0.74- 1.17	0.90	0.72- 1.13
12≤16	1.03	0.92- 1.14	1.01	0.91- 1.13	1.05	0.95- 1.17	0.87	0.64- 1.17	0.92	0.68- 1.25	0.84	0.62- 1.15
16≤25	1.03	0.91- 1.16	0.91	0.80- 1.02	0.95	0.84- 1.07	0.85	0.60- 1.19	0.79	0.56- 1.11	0.78	0.55- 1.10

Table 4b Single-pollutant models. Odds ratios for ischemic stroke and hemorrhagic stroke in association with individually modelled levels of NO<sub>x</sub> and measured background levels of PM<sub>10</sub> and ozone, and temperature, Lag 0-Lag 2. Designed as a case-crossover study, analysed with logistic regression.

	Ischemic stroke						Hamorrhagic stroke					
	Lag 0		Lag 1		Lag 2		Lag 0		Lag 1		Lag 2	
	OR	95 % CI	OR	95 % CI	OR	95 % CI	OR	95 % CI	OR	95 % CI	OR	95 % CI
<hr/>												
NO <sub>x</sub> (µg/m <sup>3</sup> )												
0≤10	1		1		1		1		1		1	
10≤30	1.01	0.95-1.08	1.01	0.95-1.07	0.99	0.93-1.05	0.92	0.79-1.08	0.95	0.82-1.11	0.91	0.78-1.07
≥30	0.96	0.87-1.06	1.01	0.92-1.12	0.96	0.87-1.06	0.93	0.72-1.20	0.89	0.69-1.15	0.79	0.61-1.03
PM <sub>10</sub> (µg/m <sup>3</sup> )												
<15	1		1		1		1		1		1	
15-<30	0.98	0.94-1.03	1.04	0.99-1.08	1.01	0.97-1.06	0.94	0.84-1.06	0.99	0.88-1.12	1.11	0.99-1.25
≥30	1.00	0.92-1.09	1.07	0.98-1.16	0.99	0.91-1.07	1.00	0.81-1.24	1.03	0.82-1.27	1.17	0.94-1.45
Ozone (µg/m <sup>3</sup> )												
<50	1	0.94-1.05	1		1		1		1		1	
50-<90	0.99	0.85-1.03	0.95	0.90-1.01	0.95	0.90-1.01	1.10	0.95-1.28	1.05	0.91-1.22	1.02	0.88-1.19
≥90	0.94		0.92	0.83-1.01	0.91	0.83-1.01	0.90	0.70-1.16	0.92	0.71-1.19	1.02	0.79-1.31
Temperature (°C)												
-10≤2.5	1		1		1		1		1		1	
2.5≤6.5	1.03	0.95-1.10	0.94	0.87-1.01	0.98	0.91-1.06	1.05	0.87-1.28	1.12	0.93-1.35	1.19	0.98-1.43
6.5≤12	0.99	0.90-1.09	0.92	0.84-1.01	0.94	0.86-1.04	1.02	0.80-1.30	0.94	0.74-	1.01	0.79-1.28

										1.20		
12≤16	1.04	0.92-1.17	0.96	0.85-1.08	0.98	0.87-1.10	0.81	0.59-1.11	0.88	0.65-1.21	0.90	0.65-1.24
16≤25	1.01	0.88-1.16	0.86	0.75-0.98	0.88	0.77-1.01	0.89	0.62-1.28	0.80	0.56-1.15	0.86	0.60-1.23

---

A statistically significant OR for a 10 unit increase in the exposure variables (pollutants and temperature) was found for:  
 ischemic stroke: temperature Lag 1, OR=0.93 (0.86-1.00) and ozone Lag 3, OR=0.95 (0.91-1.00) and  
 hemorrhagic stroke: temperature Lag 0, OR=0.80 (0.66-0.97).